

PRODUCT DRAWING	CUSTOMER NO.:	
	FILENAME:	REVISION:
DRAWING OF TB1017S	ORIGINAL DATE: 02 AUG 2005	TOTAL PAGES: 3
<input checked="" type="checkbox"/> INITIATE <input type="checkbox"/> REVISE		EFFECTIVE DATE:
REVISIONS		
REV	DESCRIPTION	DATE
ORIGINATOR		DESIGN MGR.



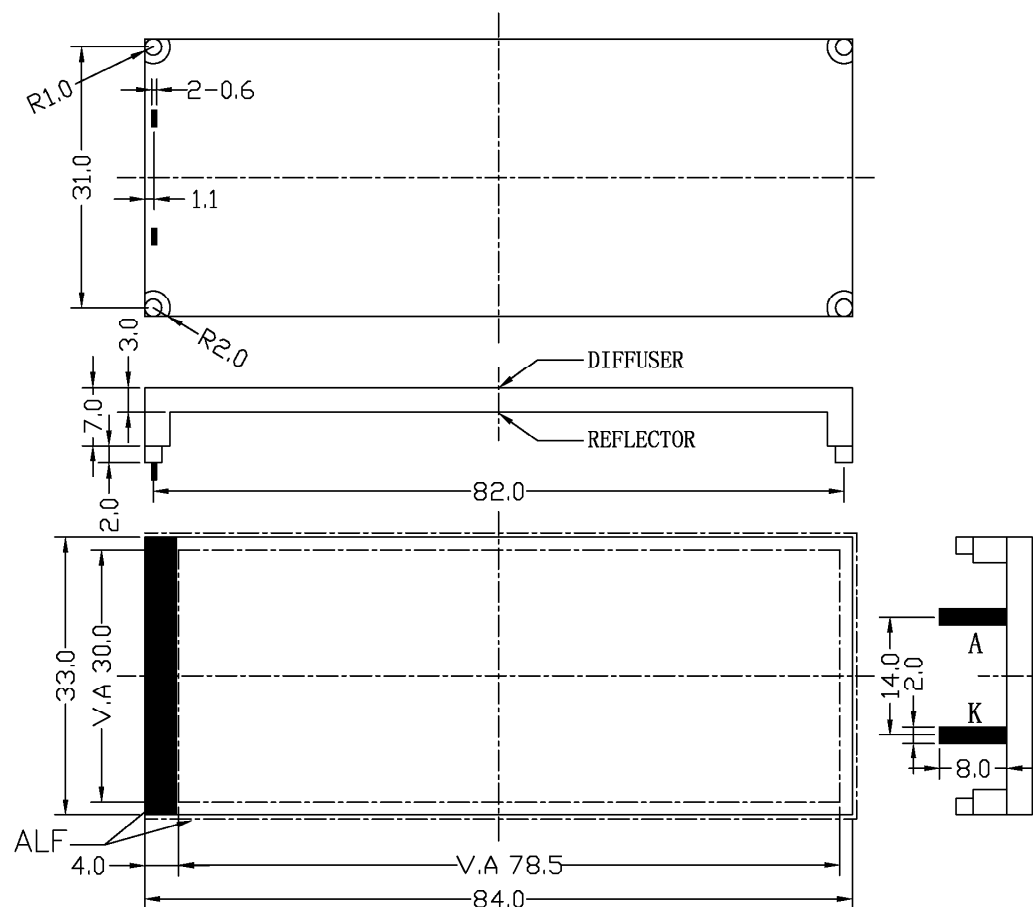
Please sign and fax back this page to confirm this drawing.  
Please indicate if you need samples.

-----  
Authorized Signatures

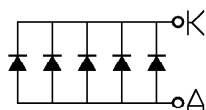
## 1. MECHANICAL OUTLINE

COLOR : RED

REV.

Unspecified Tolerances is  $\pm 0.3$ 

## 2. CIRCUIT DIAGRAM (LED 1x5=5 dies)



## 3. STORAGE &amp; SOLDERING CONDITIONS:

- Store with care. Storing the units in bad condition will cause the reflector sheet and decrease its adhesive power. Storage The products under the condition: temperature ( $25^{\circ}\text{C} \pm 10^{\circ}\text{C}$ ) and humidity ( $65^{\circ}\text{CRH} \pm 20^{\circ}\text{CRH}$ ) our recommendation.
- The Soldering Temperature is  $260 \pm 5^{\circ}\text{C}$  and Soldering Time should be less than 3 sec, and soldering iron power is 30W or less than 30W.
- The soldering point should be farther than 1.6mm (1/10") from body .

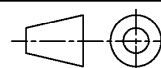
Designed by:

Checked by:

File name:

Unit:

mm



Sheet:

2 of 3

## 4. ABSOLUTE MAXIMUM RATINGS

REV.

Unless specified, The Ambient temperature  $T_a=25^{\circ}\text{C}$ 

Item	Symbol	Conditions	Rating	Unit
* Absolute maximum forward current	Ifm		125	mA
* Peak forward current	Ifp	1 msec Plus 10% Duty Cycle	300	mA
Reverse Voltage	Vr		5	V
* Power dissipation	Pd		250	mW
Operating Temperature Range	Topr		$-30\sim+70^{\circ}\text{C}$	$^{\circ}\text{C}$
Storage Temperature Range	Tstg		$-40\sim+80^{\circ}\text{C}$	$^{\circ}\text{C}$

\*

For operation above  $25^{\circ}\text{C}$ , The Ifm Ifp & Pd must be derated, the Current derating is  $-1.80\text{ mA}/^{\circ}\text{C}$  for DC drive and  $-4.30\text{ mA}/^{\circ}\text{C}$  for Pulse drive, the Power dissipation is  $-3.75\text{ mW}/^{\circ}\text{C}$ . The product working current must not more than the 60 % of the Ifm or Ifp according to the working temperature.

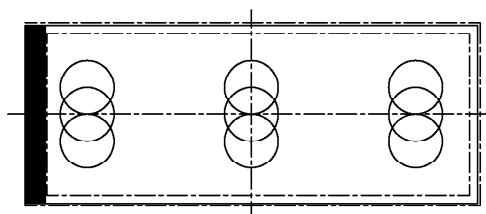
## 5. ELECTRICAL-OPTICAL CHARACTERISTICS

Unless specified, The Ambient temperature  $T_a=25^{\circ}\text{C}$ 

Item	Symbol	min.	typ.	max.	Unit	Condition
Forward Voltage	Vf	1.9	2.1	2.2	V	If= 100 mA
Reverse Current	Ir			125	$\mu\text{A}$	Vr= 5 V
Peak wave length	$\lambda_p$	630	633	636	nm	If= 100 mA
Spectral Line Half width	$\Delta\lambda$				nm	If= 100 mA
* Luminance	Lv				$\text{cd}/\text{m}^2$	If= 100 mA

\*

The luminance is the average value of 5 points, and  
The  $L_{v\text{max.}}/L_{v\text{min.}}$  is less than 1.5 Typical (max 1.7 ).  
The measurement instrument is BM-7/Tes 1330A luminance



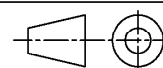
Designed by:

Checked by:

File name:

Unit:

mm



Sheet:

3 of 3