

MODEL 22

3mm Single Turn

Sealed Surface Mount

Cermet Trimming

Potentiometer



1

ELECTRICAL

Standard Resistance Range, Ohms	100 to 1Meg
Standard Resistance Tolerance	±20%
Input Voltage, Maximum	200 Vdc or rms not to exceed power rating
Power Rating, Watts	0.125 at 70°C derating to 0 at 125°C
End Resistance, Maximum	1% or 3 Ohms, whichever is greater
Actual Electrical Travel, Nominal	220°
Dielectric Strength	500Vrms
Insulation Resistance, Minimum	100 Megohms
Resolution	Essentially infinite
Contact Resistance Variation, Maximum	3% or 3 Ohms, whichever is greater

ENVIRONMENTAL

Seal	85°C Fluorinert®
Temperature Coefficient, Maximum	±100ppm/°C (<200 ohms = ±250ppm/°C)
Operating Temperature Range	–55°C to +125°C
Thermal Shock	5 cycles, –55°C to +125°C (2% ΔR, 1% ΔVR)
Moisture Resistance	Ten 24 hour cycles (3% ΔR)
Shock, 6ms Sawtooth	100G's (1% ΔR, 1% ΔVR)
Vibration	20G's, 10 to 2,000 Hz (1% ΔR, 1% ΔVR)
High Temperature Exposure	250 hours at 125°C (2% ΔR, 2% ΔVR)
Rotational Life	100 cycles (5% ΔR)
Load Life at 0.25 Watts	1,000 hours at 70°C (3% ΔR, 2% ΔVR)
Resistance to Solder Heat	260°C for 5 sec. (1% ΔRT, 2% ΔVR)

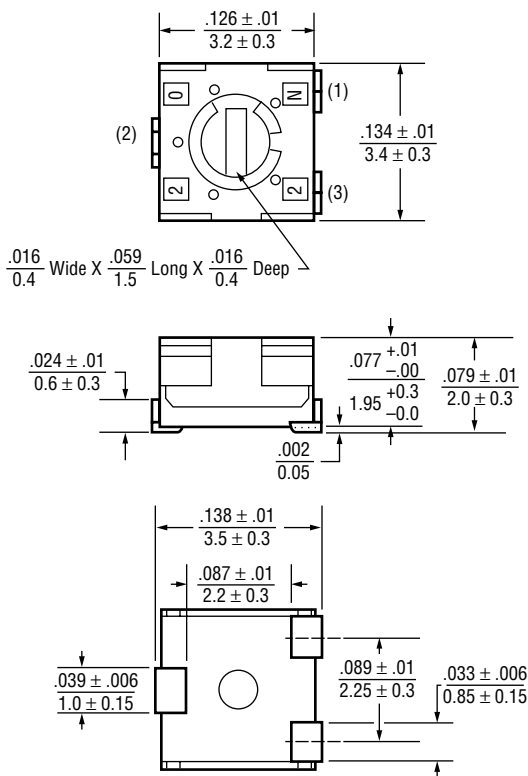
MECHANICAL

Mechanical Stops	Solid
Stop Strength, Minimum	1.3 oz.-in. (100 gr-cm)
Torque, Maximum	.65 oz.-in. (50 gr-cm)
Weight, Nominal	.002 oz. (0.068 grams)

Fluorinert® is a registered trademark of 3M Company.
Specifications subject to change without notice.

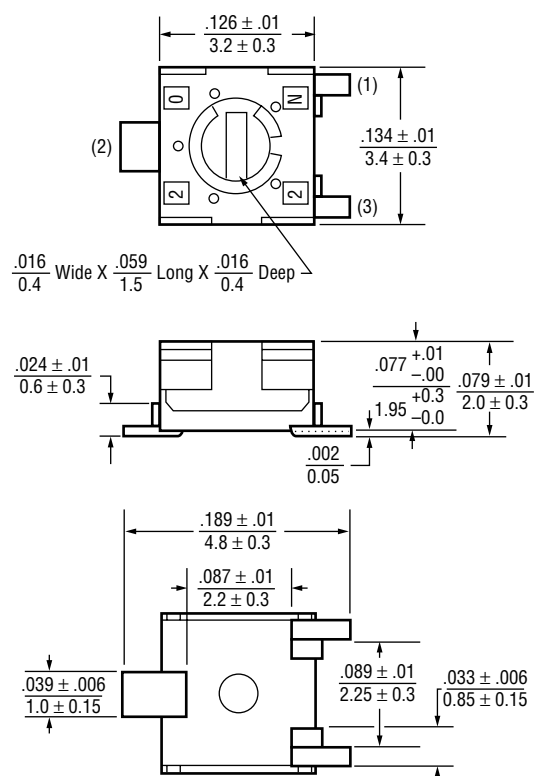
TOP ADJUSTMENT

Model 22A - J Hook



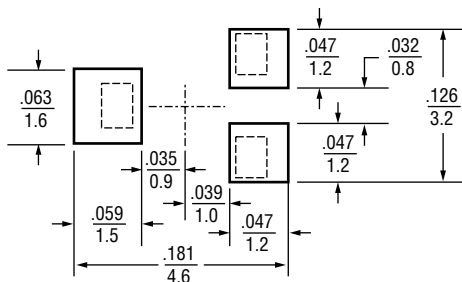
TOP ADJUSTMENT

Model 22B - Gull Wing

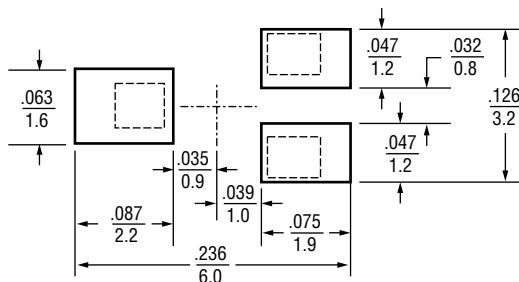


RECOMMENDED PCB LAYOUT

Model 22A



Model 22B



STANDARD RESISTANCE VALUES, OHMS

100	1K	10K	100K	1Meg
200	2K	20K	200K	
500	5K	50K	500K	

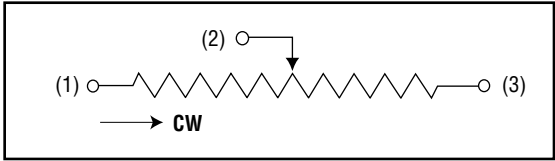
PACKAGING

Standard: Boxes			
Capacity	=	100 units	
Option: Embossed Tape			
All units oriented with #2 (slider) terminal pads adjacent to sprocket holes			
Tape	Width	=	12 mm
	Sprocket	=	4 mm Pitch
	Capacity	=	1,000 units
Reel	Diameter	=	7" (178mm)

ORDERING INFORMATION

Standard:			
Model Series	22	A R	10K
Pin Style			
			Resistance Value
			Resistance Prefix
Option:			
Pin Style	22	A R	10K TR
			Packaging Option
			TR = Tape & Reel

CIRCUIT DIAGRAM



NOTES

English equivalents are based on 1 inch = 25.4mm and are provided for general information only.	
Tolerances unless otherwise specified: Linear = ± 0.3 mm (.01 in.)	
<div><div>DIMENSIONS</div><div>INCH</div><div>mm</div><div></div><div>THIRD ANGLE PROJECTION</div></div>	

